



Compass DualBoiler UPGRADE



The Dual Boiler **UPGRADE** brings everything a barista can dream of!



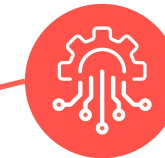
Dual Boiler

Independent boilers for steam and coffee. PID-Control of temperatures in 3 different points: steam boiler, coffee boiler and group heads



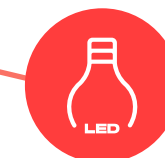
NEW: PHS

Pre-heating system: water is pre-heated through the steam boiler before reaching the coffee boiler, ensuring thermal stability and increased performance



Digital Management

Easy control and real-time monitoring of portions, temperatures, counters and timings via the display



LED Lighting: **standard**

For a barista workspace that's as functional as good looking

The Dual Boiler **UPGRADE**



User-friendly Barista Ergonomics

Enjoy a smooth workflow with ergonomic knobs and handles and reinforced portafilters



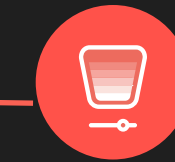
Static Pre-Infusion

A pre-infusion chamber in each of the group heads, assures a smooth extraction



Cup Warmer

Electric cup warmer, as standard



Portioned Hot Water

Programmable hot water portions with controlled temperature, as an optional



Tall Cups or Small Cups

Choose between tall cups model with tiltable stainless steel grids for espresso cups or models with low groups

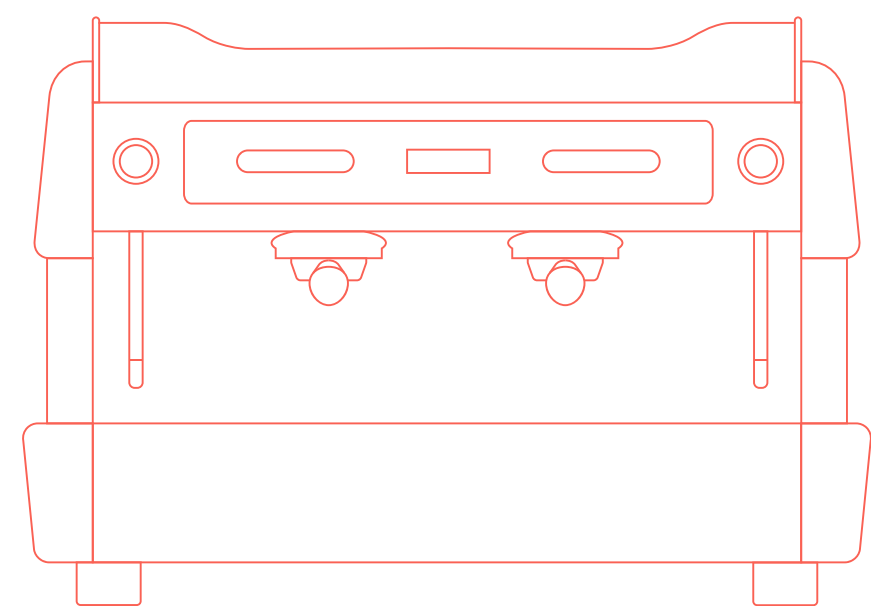


hello@fiamma.pt



Compass Dual Boiler **UPGRADE**

	Compass 2 DB	Compass 3 DB
Boiler technology	DUAL BOILER	
Temperature control	PID	
Coffee boiler power & capacity	2 kW, 0.8 l	2 kW, 0.8 l
Steam boiler power & capacity	3 kW, 10.5 l	3.5 kW, 12 l
Overall power	3.5 ~ 5.5 kW	4.2 ~ 6.2 kW
Voltage	~220-240 V	400 V ~2N
Dimensions Tall Cups	750x600x600x540 mm	960x600x540 mm
Dimensions Small Cups	750x600x600x590 mm	960x600x590 mm



S C O M P A S S

MKT0121